



Image Processor with Display



**Photo & Video
Function**



**Strong
Compatibility**



**Patient Profiles
Management**



PRODUCT PARAMETERS

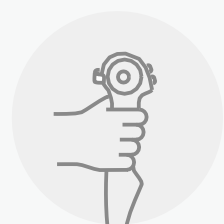
Model Number	
Screen Size	10.1 inch
Resolution	1920 X 1080P
Storag capacity	32 GB
Video	10/14 Pin Lemo Plug
Video Output	AV, HDMI. SDI , DVI, USB3.0
Recording Format	JPG for photo , MP4 for video
Function	Freeze, Snap , Recording , USB Storage, White Balance, Zoom In/ Zoom Out
Dimensions	260mm X 210mm X 50mm



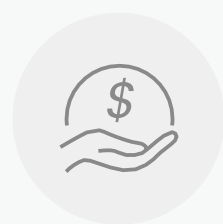


7.5 Fr. Reusable Flexible Ureteroscope

The 7.5 Fr. reusable ureteroscope represents the latest and most advanced technology, uniquely available in India, offering unmatched precision and performance..



**Ultra-light
Ergonomic
Handle,Reduce
fatigue**



**Reusable,Reduce
cost**



**Ultra-clear
Image**

Luer Lock

With luer connector
included in every scope

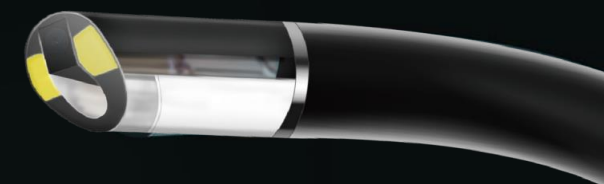
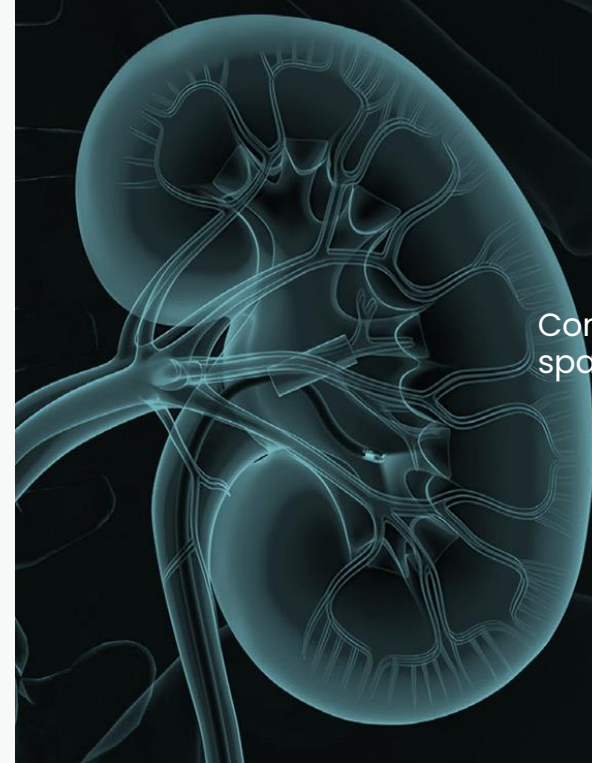
Programmable head keys

Assign specific actions to the
programmable head keys

Ergonomic Handle

Effectively relieve
fatigue during surgery

7.5 Fr Ultra Slim Insertion Tube



Compatible well with adjustable suction access sheath, bigger space to improve suction efficiency, more irrigation flow per time.



Optimized Graphics

CMOS+2LED image
technology



Bullet Design

Drilling into the ureter is easier

Product Parameters

Insertion Tube O.D	Part No.	Working channel	Working length	Angulation Range
7.5 Fr		3.6Fr (1.2mm)	650mm	275°Up/275°Down

Passive Bending

Automatically bends
when encountering
resistance

275°Up/Down

Viewing angle



Single Use Ureteroscope

Disposable ureteroscope has excellent performance, no repair and maintenance cost.

Ergonomic

Effectively relieve fatigue during surgery

275°

275°excellent deflection in both directions

True 1:1

1:1 implementation of hand movements through to the distal end

Luer Lock

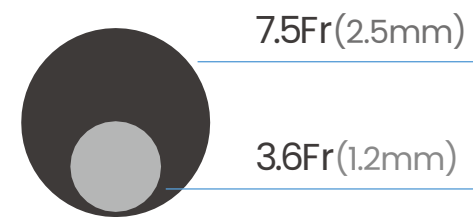
Included in every scope



7.5Fr Ultra Slim Insertion Tube

Compatible well with adjustable suction access sheath, bigger space to improve suction efficiency, more irrigation flow per time.

7.5Fr



Bullet Design

Drilling into the ureter is easier



Optimized Graphics

CMOS+2LED image technology

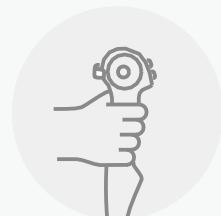
Product Parameters

Model	
Insertion Tube Outer Diameter	7.5Fr (2.5mm)
Working Channel Diameter	3.6Fr (1.2mm)
Working Length of Shaft	650mm
Angulation Range	275°Up/275°Down

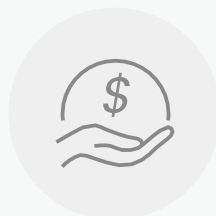


8.4 Fr. Reusable Flexible Ureteroscope

Reusable ureteroscopes can significantly reduce medical procurement costs. Following standardized cleaning and disinfection procedures ensures effectiveness and safety.



Ultra-light Ergonomic Handle, Reduce fatigue



Reusable, Reduce cost



Ultra-clear Image

Luer Lock

With luer connector included in every scope



Programmable head keys

Assign specific actions to the programmable head keys



Ergonomic Handle

Effectively relieve fatigue during surgery

Passive Bending

Automatically bends when encountering resistance

275°Up/Down

Viewing angle

More flexible operation

8.4Fr

Insertion Tube



Optimized Graphics

CMOS+2LED image technology



Bullet Design

Drilling into the ureter is easier

Product Parameters

Insertion Tube O.D	Part No.	Working channel	Working length	Angulation Range
8.4Fr/9.0Fr		3.6Fr	650mm	275°Up/275°Down



Single Use Cystoscope

Flexible insertion tube, ultra-thin working channel, does not restrict the patient's posture, reduce the trauma caused by examination and treatment.

High Image Quality

CMOS+LED technology for clear, natural-looking images



210°Up/210°Down

Wider Angle, no blind angle in bladder and urethra

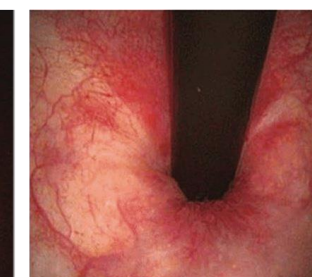
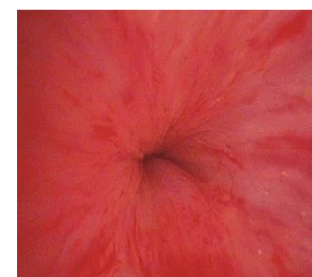


2.2mm Working Channel

Compatible with a variety of surgical instruments



Clearly present intravesical images



Product Parameters

Model	
Insertion Tube Outer Diameter	5.2mm
Working Channel Diameter	2.2mm
Insertion Tube Length	380mm
Angulation Range	210°Up/210°Down

Divine Meditech Private Limited



Corporate Offices:-

G-197, Sector-63, Noida, Gautam Buddha

Nagar, Uttar Pradesh- 201309

☎ 91-9818396505 ✉ info@divinemeditech.in

🌐 www.divinemeditech.in



Manufacturing Unit:-

Plot No.: 18, Phase III, Industrial Area, Tahlilwal,

Dist. Una, H.P. - 174301 (India)

☎ 91-9818396505 ✉ info@divinemeditech.in

🌐 www.divinemeditech.in