

Multi-type Optional

# 3 Combinations

- Logical bending + 9 o'clock instrument exit
- Anti-Logical bending + 3 o'clock instrument exit
- Anti-Logical bending + 9 o'clock instrument exit



## Ordering information

Product	Item code
Single-use ureterorenoscope-HU30M	
EU Standard (Anti-logic Deflection) (L)	B-8000-043
US Standard (Logic Deflection) (L)	B-8000-053
EU Standard (Anti-logic Deflection) (R)	B-8000-052
Medical Image Processor	
HUV-02 with its accessories	2201B-PA001
MS-8 with its accessories	2288B-PA001

Specifications, design and accessories are subject to change without any notice or obligation on the part of the manufacturer.

HugeMed

Shenzhen HugeMed Medical Technical Development Co., Ltd.  
401, 501, Building4, FutongHaizhi TechnologyPark, No.17, BulanRoad, XialilangCommunity, NanwanStreet,  
LonggangDistrict, Shenzhen, Guangdong, China, 518112  
+86-755-22275833 +86-755-22275833 info@hugemed.net

For more information  
please visit our website:  
www.hugemed.net

HugeMed

f-URS  
enters  
the era of  
6.3<sub>FR</sub>

Single-use  
Ureterorenoscope  
HU30M



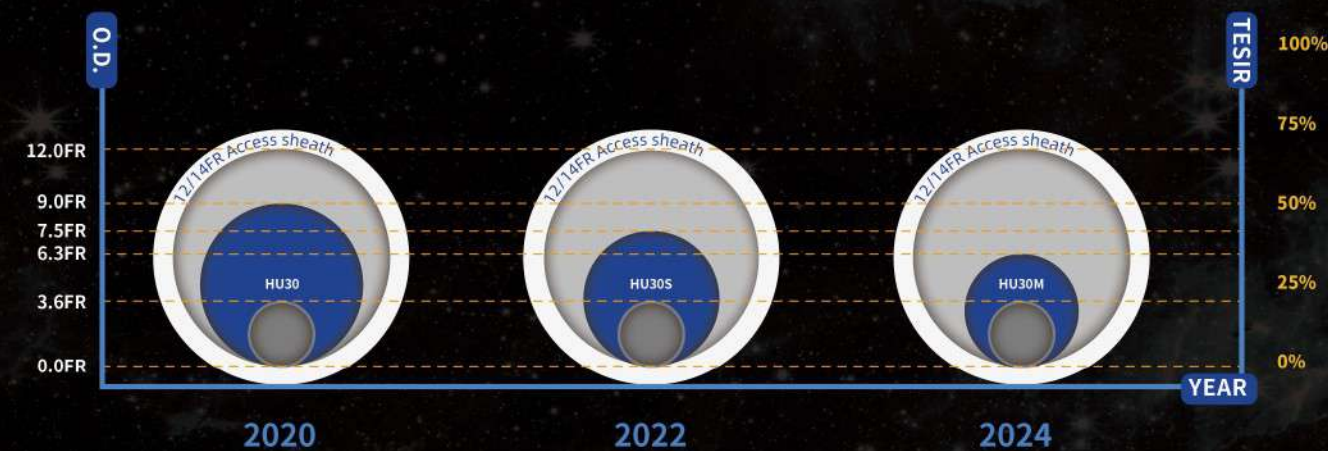
MGP  
P/N: ENG-EU-CATA-fURS-suHU-HU30M-202404V1.0



# HugeMed

## HU series f-URS

### EVOLUTION



- The cross-section of HugeMed™ f-URS
- The cross-section of the working channel
- The cross-section of the expulsion space
- The cross-section of the UAS

TESIR: Theoretical  
expulsion space  
increasing rate

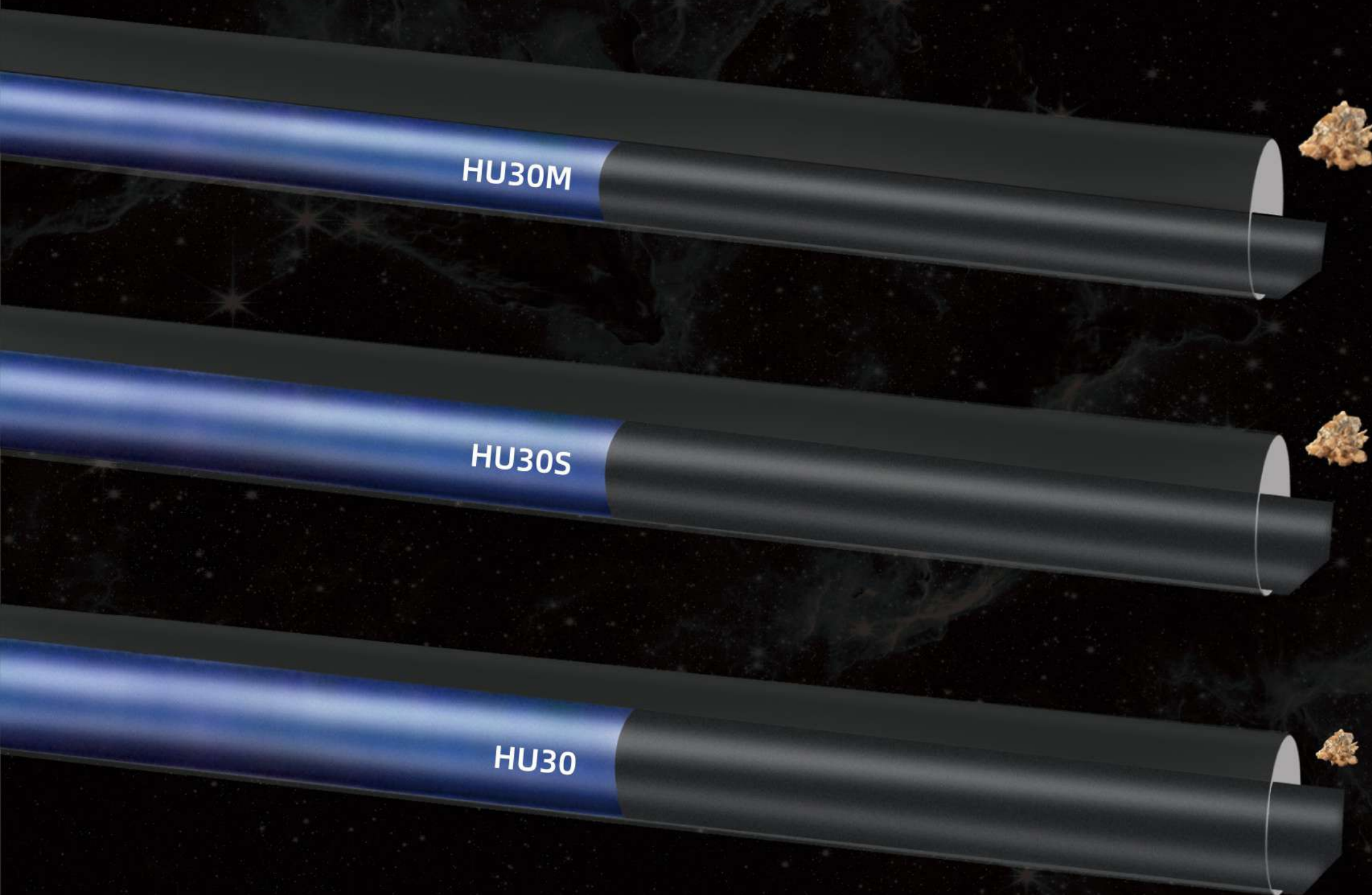
**Note: The comparison of the expulsion space indicates:  
HU30 < (39%) HU30S < (27%) HU30M.**

What clinical challenges  
are addressed by

**SLIMMER**







## Enhanced Stone Clearance Capacity

- Shorten RIRS lithotripsy operation time
- Reduce incidence of post-RIRS Stone Street
- More complete stone-free rate of single-session RIRS



## Decrease Stenting

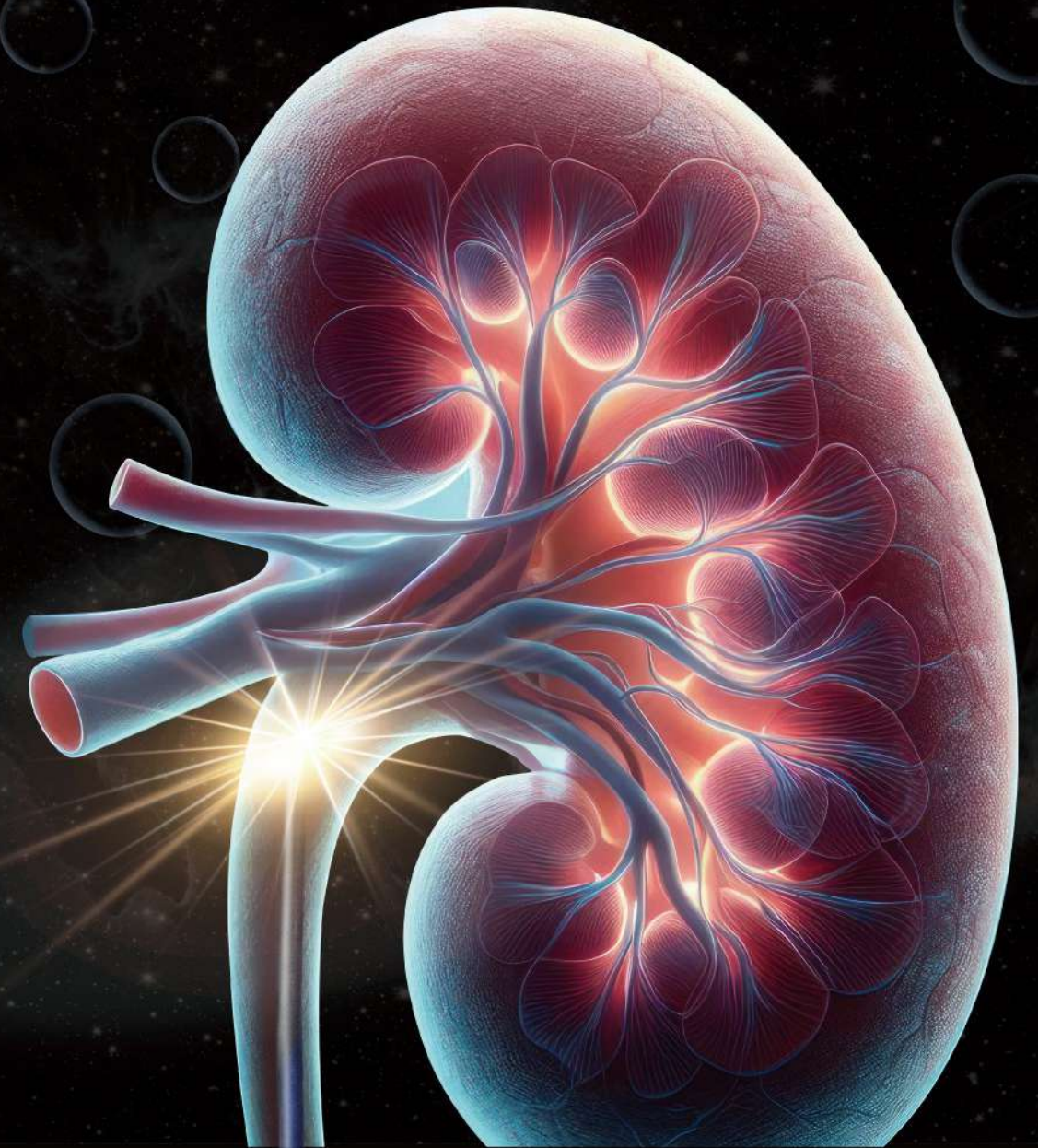
### Procedure in pre-operation and post-operation

- More primary ureteroscopy
- Reduce patient length of stay
- An alternative to emergency stenting



## Offer More Space to Intra-Renal Temperature and Pressure Management

- More outflow space for taking away laser heat
- More outflow space for releasing irrigation pressure





What else has been  
**Upgraded**



Connection  
**Gold Fingers**  
PCB plug

- Smooth insertion
- Stable electrical conductivity





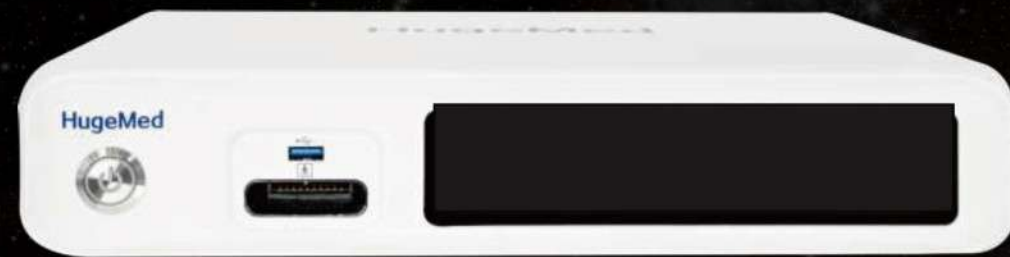
**Flexibility**

**120°** left and right  
Insertion tube rotation

- Added mobility of exploration
- More accurate to aim at targets
- Enhanced team collaboration



# Compatible With 2 Types of Processors



## HUV-02

### Medical Imaging Processor

- Touch-screen control
- Standard edge connector
- Flat design for easy deployment
- Full HD output 1920\*1080 resolution



## MS-8

### Medical Imaging Processor

## All-in-One

Display | Processor | Recorder  
15.6 inch touch control

- A portable imaging solution for ureteroscopy clinical practice.